

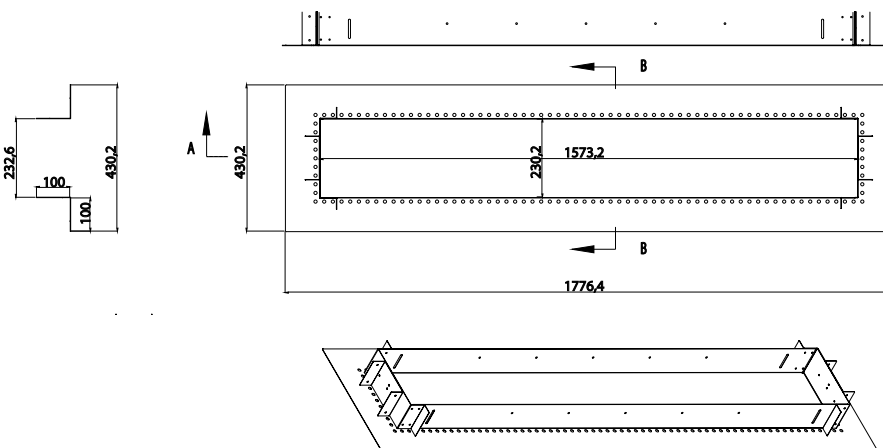
## EF61FMPF Series



61"

### FEATURES

Ideal for both indoor and outdoor applications in commercial or residential settings and crafted from durable 304 stainless steel, it is built to withstand the elements, ensuring long-lasting performance.



DESCRIPTION	CODE	FINISH	CODE	CUSTOMIZATION	CODE
61" Flush Mount Kit	EF61FMPF	BLACK	B	MARINE GRADE STAINLESS STEEL	316-SS
		STAINLESS STEEL	S		
		WHITE	W	CUSTOM COLOR	RAL#

• For custom manufacturing contact sales

Project \_\_\_\_\_

Type \_\_\_\_\_

Date \_\_\_\_\_

Address \_\_\_\_\_

Company \_\_\_\_\_

- Compatible with all EF heaters
- Designed for commercial and residential applications.
- Available in a standard 304 Stainless Steel, Black, White or Marine Grade 316 Stainless Steel finish
- ETL Listed



### SPECIFICATIONS

SERIES	SERIES EF61FMPF
FINISH	Black, Stainless Steel, White, Custom
CONSTRUCTION	Stainless Steel (Standard: 304 SS; Optional: 316 Marine Grade SS)
COMPATIBLE MODELS	EF15, EF20, EF25, EF40, EF50 SERIES (61" HEATERS)
MOUNTING TYPE	Recessed
INTERNAL MEASUREMENTS	L= 61.94 in (1573.20 mm) W= 9.06 in (230.2mm)
EXTERNAL MEASUREMENTS	L= 69.94 in (1776.40mm) W= 16.94 in (430.20mm)
WEIGHT	18.7 lbs
WARRANTY	3 years
ACCESSORIES	1x 4ft High Temperature Whip 4 x "L" Brackets & Screws 3 x High Temperature Murette

### 61" FLUSH MOUNT FRAME

- To accommodate a 61-inch heater, the finished opening should measure 65 5/8" x 12" inches.

